

DINB100-SA

MINI STANDALONE BIOMETRIC READER

DINB100-SA is a simple one-door standalone biometric system. The reader can store up to 100 finger templates, it has one relay output and one exit button input. If secure installation is needed, the reader can be connected to remote relay unit at secured area, which also plays the role of exit push button. Complete setup and programming can be done by scrolling on the sensor.

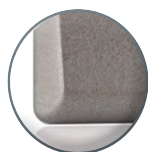
FEATURES

- Mounting: Flush mount
- Capacity: 100 Finger templates (98 users, 1 Admin, 1 Installer)
- Output: 1 x Relay (2A, 24V AC/DC) - 2 relays combined with DIN-RTT
- Push Button Input: Yes
- Wiring: Terminal blocks
- Door Time: Pulse (1, 3, 5, 10, 20, 30,60 sec) or Toggle (ON/OFF)
- Entry Mode: Finger (Basic installation)
Finger or Card, Finger and card (when used with card reader DINMTPX)
Finger or PIN, Finger and PIN (when used with keypad DINPAD-M)
- Sensor: Swipe Capacitive
- Programming: By scrolling on the sensor or by keypad (when used with keypad DINPAD-M)
- Backlight ON/OFF: Yes
- Buzzer ON/OFF: Yes
- Current Consumption: 100 mA
- IP factor: IP40 (indoor use only)
- Operating temperature: -15°C to +50°C non condensing
- Dimensions (mm): 80 x 80 x 9

COLOURS



DINB100S-SA
Silver



DINB100C-SA
Charcoal

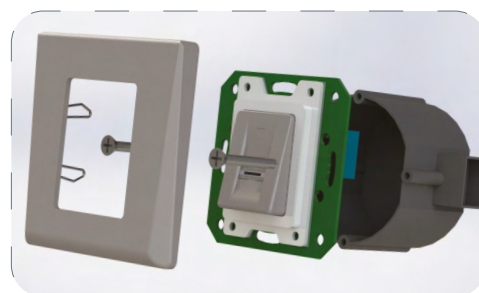


DINB100W-SA
White

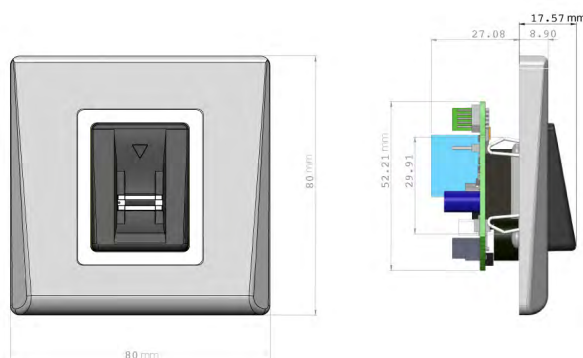


- CAN BE CONNECTED TO PROX. READER OR KEYPAD FOR DOUBLE SECURITY READER
- CAN BE CONNECTED TO REMOTE RELAY UNIT FOR SECURE INSTALLATION
- EASY INSTALLATION FITTED IN STANDARD ELECTRICAL GANG BOXES

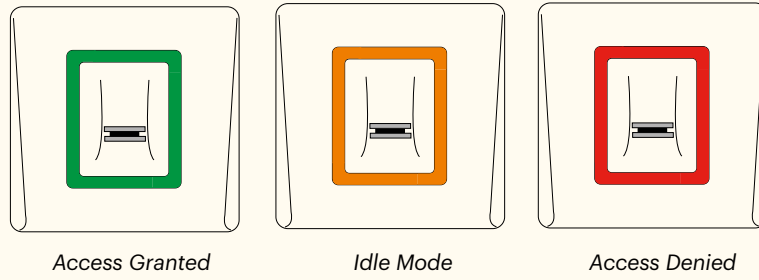
MOUNTING



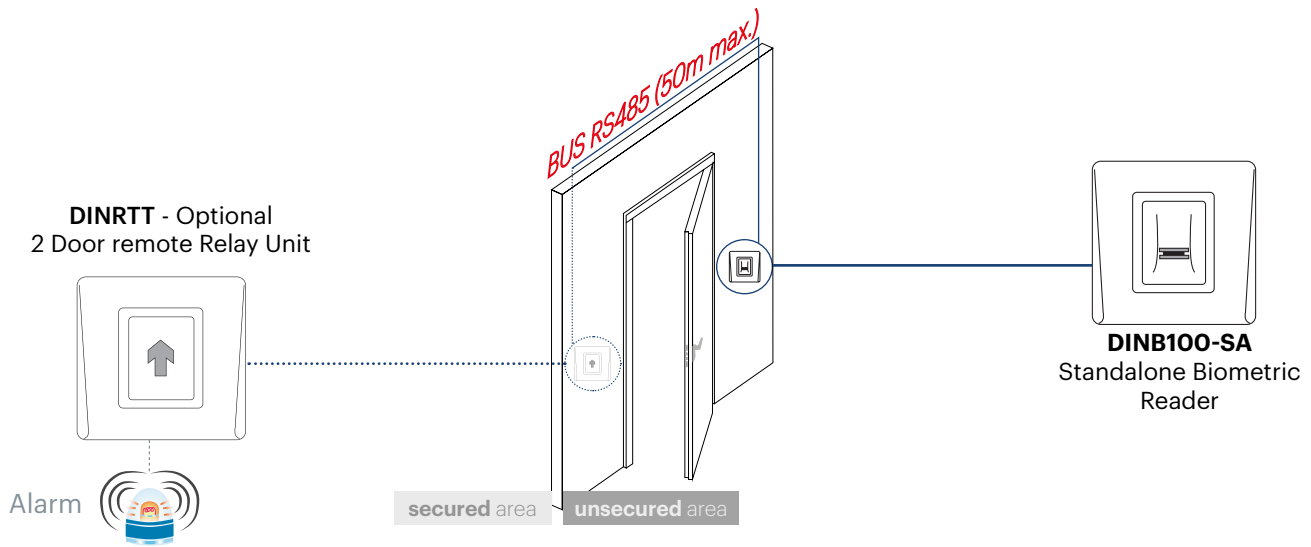
DIMENSIONS



Tricolor Indication uni-LED



WITH REMOTE RELAY AT SECURED AREA



WITH KEYPAD OR READER AND RELAY AT SECURED AREA

