

# EWS/EWSI

## 2 DOOR ACCESS CONTROL UNIT

### Powerful:

Up to 15,000 users.  
Up to 30,000 Events per controller.

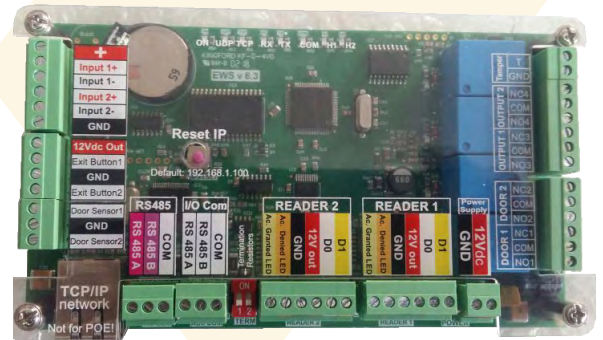
### Upgradeable:

Unlimited controllers per system.  
Firmware update through PROS CS Software.

### Flexible:

Programmable (Bitwise) Wiegand Interface (26bit to 128).  
Configurable Outputs, Inputs, Door sensors.

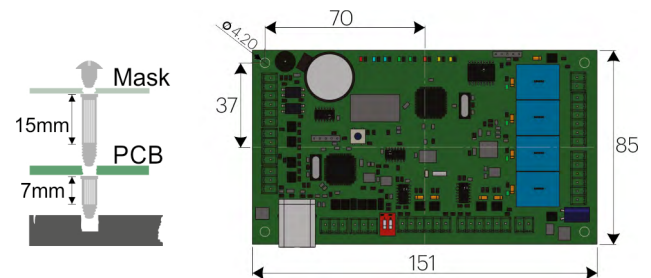
EWSI



## FEATURES

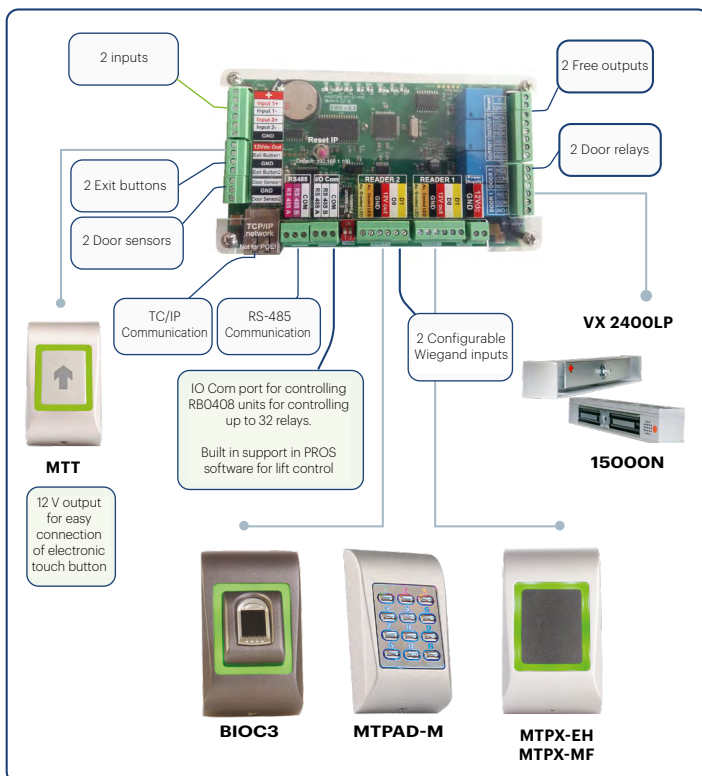
- 2 doors networkable access control unit.
- Distributed intelligence. EWS units will function even if the communication is not present.
- Failure of one EWS unit will not influence the other Units.
- TCP/IP built in EWSI.
- Programmable (Bitwise) Wiegand Interface (26bit to 128bit).
- Configurable inputs, Outputs, Door Sensors.
- Anti-passback, Timed Anti-passback, Mantrap.

## DIMENSIONS

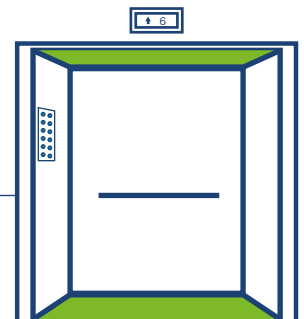


### EWS-EWSI

2 Door Access Control Unit with built in TCP/IP,  
Door Sensor Inputs, Push Button inputs and Inputs/outputs

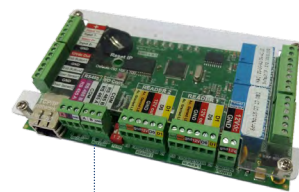


### LIFT CONTROL



The EWS/EWSI Controller can be put in Lift Mode for controlling the floor access and permitting the use of elevator only by authorized cardholder.

- One I/O Board RB0408 enables control of 8 floors.
- Max. of 4 RB0408 boards can be used per EWS/EWSI controller (32 floors).



EWS/ EWSI

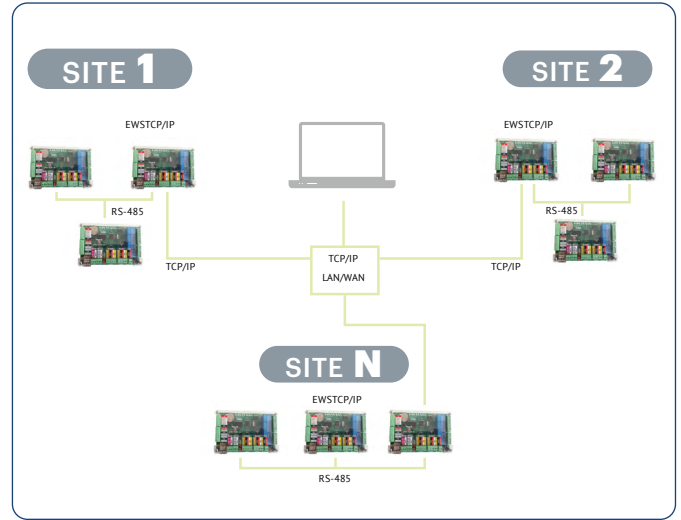
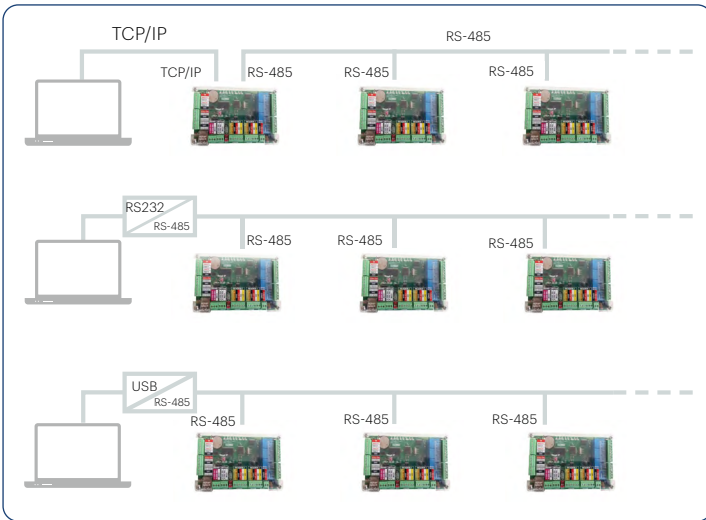


RB0408



RB0408

# SYSTEM ARCHITECTURE



a) Combining TCP / IP and RS-485 in one system for maximum flexibility (unlimited number of controllers in the system, up to 31 devices including readers in one RS-485 line - max. distance 1 km).

CLIENT  
**PROS CS**  
SERVER

## PROS CS SOFTWARE

- Client-Server Software, multiple users can access the server PC.
- User-Friendly windows Interface for simple programming, management and control of installations.

More info about the software on:  
<http://www.xprgroup.com/products/pros-cs/>