



D-307122

English

WCDMA-3G PG2

Internal WCDMA-3G module for PowerMaster control panels



Visonic

Installation Instructions

1. INTRODUCTION

The internal WCDMA-3G module enables the PowerMaster control panel to operate over a GSM/GPRS/UMTS cellular network. The WCDMA-3G model is optional and can be installed in any of the following control panels:

- PowerMaster-10 G2, see figure 1a for details.
- PowerMaster-30 G2, see figure 1a for details.
- PowerMaster-33 G2, see figure 1a for details.
- PowerMaster-360R, see figure 1b for details.

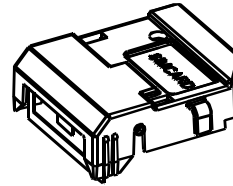


Fig. 1a WCDMA-3G PG2

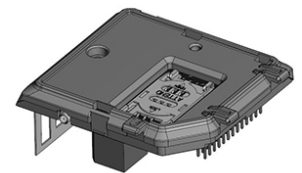


Fig. 1b WCDMA-3G PG2

2. INSTALLATION

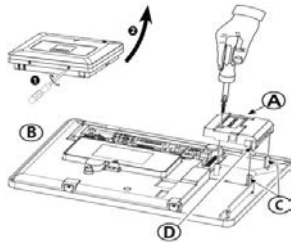


Fig. 2.1 WCDMA-3G PG2 module mounting PowerMaster-33 G2

- A. WCDMA-3G PG2 module B. Front unit C. *Leading ribs D. *Leading slot (1 of 2)
 *PowerMaster-33 G2 only

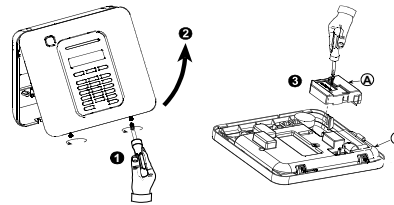
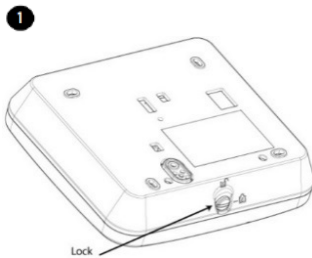


Fig. 2.2 WCDMA-3G PG2 module mounting PowerMaster-10 G2 and PowerMaster-30 G2

1. Release screws.
2. Remove front unit.
3. Plug in the WCDMA-3G module and fasten it with the screw.
4. For PowerMaster-33 G2, ensure that the two leading slots (D) on both sides of the module slide along the two leading ribs (C) on the front unit.



1. Use a coin or 3 mm flathead screwdriver to rotate the lock by 90 degrees counter clockwise to the unlocked position.
2. Use minimal force to pull the panel from the base.
3. Plug in the WCDMA-3G module and fasten it with the screw.

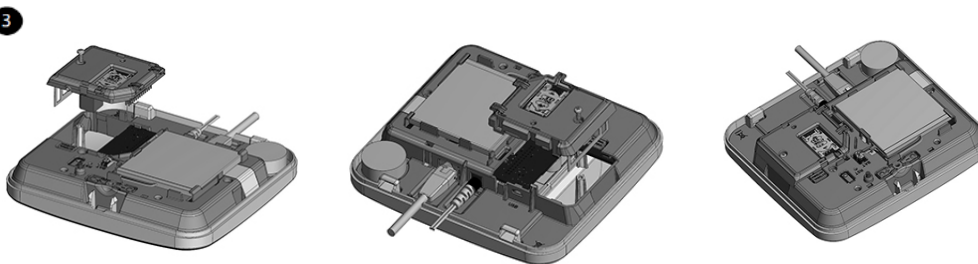
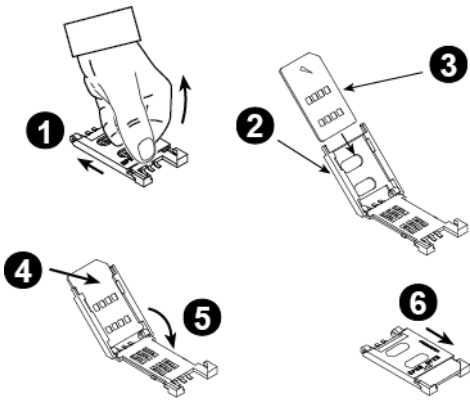
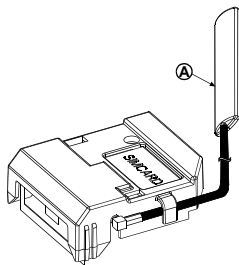
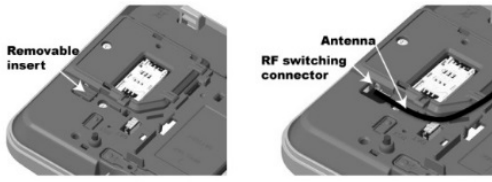


Fig. 2.3 WCDMA-3G PG2 module mounting PowerMaster-360R

Inserting the SIM card

 <p style="text-align: center;">Fig. 3 SIM card insertion</p>	<ol style="list-style-type: none"> 1. Slide top cover 2. Open cover 3. Align SIM card in cover (note cover orientation) 4. Slide SIM card into cover 5. Rotate cover to close 6. Lock cover to close <p>IMPORTANT! Do not insert or remove the SIM card when the control panel is powered by AC power or battery.</p>
---	--

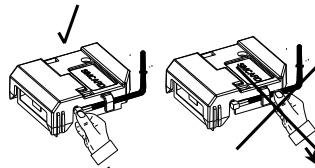
External cellular antenna installation - Optional

<p>PowerMaster-10 G2, PowerMaster-30 G2 and PowerMaster-33 G2</p> <p>Mount the optional cellular external antenna on the desired site surface, connect its connector to the internal WCDMA-3G module and insert the SIM card.</p>  <p style="text-align: center;">Fig. 4a Optional external cellular antenna</p> <p>A. External cellular antenna</p>	<p style="text-align: center;">PowerMaster-360R</p> <ol style="list-style-type: none"> 1. Push out the removable insert for the external antenna, see figure 4b for details. 2. Connect the external antenna to the RF switching connector, see figure 4b for details.  <p style="text-align: center;">Fig. 4b Optional external cellular antenna</p>
--	--

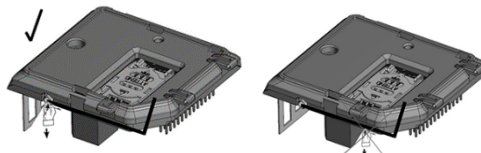
Warning!

If required to remove the external antenna, hold the connector but not the cable and pull it out. This prevents damage to the PCB.

PowerMaster-10 G2, PowerMaster-30 G2 and PowerMaster-33 G2:



PowerMaster-360R:



3. SPECIFICATIONS


Modem	UE910 EUR for WCDMA-3G 433 and WCDMA-3G 868, UE910 NAR for WCDMA-3G 915 manufactured by TELIT		Ports	2 UART ports Balanced analog audio port
Communication	Data, Voice, SMS		CODEC types	GSM: FR, HR, EFR, AMR WCDMA: AMR
Supply voltage	3.4 – 4.2 VDC (3.8 VDC recommended)		GPRS	Class 10
Bands	UE910 EUR: GSM/GPRS: 900, 1800 MHz WCDMA: 900, 2100 MHz	UE910 NAR: GSM/GPRS: 850, 1900 MHz WCDMA: 850, 1900 MHz	External SIM card	3V/1.8V
Transmission power	GSM/GPRS: Low bands – Class 4 (up to 2 W) High bands – Class 1 (up to 1 W) WCDMA: Class 3 (up to 0.25 W)		Minimum current consumption in idle mode	24 mA
			Maximum current consumption: GPRS class 10 mode GSM voice call WCDMA voice call WCDMA data	440 mA 220 mA 200 mA (Tx power = 10 dBm) 500 mA (Tx power = 22 dBm)
Sensitivity	GSM 850 – 109.5 dBm GSM 900 – 109 dBm DCS 1800 – 110 dBm PCS 1900 – 109.5 dBm	WCDMA 2100 – 111 dBm WCDMA 1900 – 110 dBm WCDMA 850 – 111 dBm WCDMA 900 – 110 dBm		
Control	by AT commands (07.05, 07.07, and TELIT enhancement)		Dimensions	50x59x20.6 mm

4. COMPLIANCE WITH STANDARDS

Compliance with GSM Standards (USA): FCC 47 Part 22 (GSM850) and Part 24 (GSM 1900). **EMC standard:** FCC 47 Part 15.

Compliance with European CE Standards: EN301489-3,7, EN60950, EN50136-1 and -2

Compliance with GSM Standards (Europe): Complies with CE standards 3GPP TS 51.010-1, EN 301 511, EN301489-7, EN 301 908

	<p>W.E.E.E. Product Recycling Declaration For information regarding the recycling of this product you must contact the company from which you originally purchased it. If you are discarding this product and not returning it for repair then you must ensure that it is returned as identified by your supplier. <u>This product is not to be thrown away with everyday waste.</u> Directive 2002/96/EC Waste Electrical and Electronic Equipment.</p>
--	---



WARRANTY

Visonic Limited (the "Manufacturer") warrants this product only (the "Product") to the original purchaser only (the "Purchaser") against defective workmanship and materials under normal use of the Product for a period of twelve (12)

months from the date of shipment by the Manufacturer.

This Warranty is absolutely conditional upon the Product having been properly installed, maintained and operated under conditions of normal use in accordance with the Manufacturers recommended installation and operation instructions. Products which have become defective for any other reason, according to the Manufacturers discretion, such as improper installation, failure to follow recommended installation and operational instructions, neglect, willful damage, misuse or vandalism, accidental damage, alteration or tampering, or repair by anyone other than the manufacturer, are not covered by this Warranty.

There is absolutely no warranty on software, and all software products are sold as a user license under the terms of the software license agreement included with such Product.*

The Manufacturer does not represent that this Product may not be compromised and/or circumvented or that the Product will prevent any death and/or personal injury and/or damage to property resulting from burglary, robbery, fire or otherwise, or that the Product will in all cases provide adequate warning or protection. The Product, properly installed and maintained, only reduces the risk of such events without warning and it is not a guarantee or insurance that such events will not occur.

Conditions to Void Warranty

This warranty applies only to defects in parts and workmanship relating to normal use of the Products. It does not cover:

- damage incurred in shipping or handling;
- damage caused by disaster such as fire, flood, wind, earthquake or lightning;
- damage due to causes beyond the control of the Seller such as excessive voltage, mechanical shock or water damage;
- damage caused by unauthorized attachment, alterations, modifications or foreign objects being used with or in conjunction with the Products;
- damage caused by peripherals (unless such peripherals were supplied by the Seller);
- defects caused by failure to provide a suitable installation environment for the products;
- damage caused by use of the Products for purposes other than those for which they were designed;
- damage from improper maintenance;
- damage arising out of any other abuse, mishandling or improper application of the Products.

Items Not Covered by Warranty:

In addition to the items which void the Warranty, the following items shall not be covered by Warranty: (i) freight cost to the repair centre; (ii) customs fees, taxes, or VAT that may be due; (iii) Products which are not identified with the Seller's product label and lot number or serial number; (iv) Products disassembled or repaired in such a manner as to adversely affect performance or prevent adequate inspection or testing to verify any warranty claim. Access cards or tags returned for replacement under warranty will be credited or replaced at the Seller's option.

THIS WARRANTY IS EXCLUSIVE AND EXPRESSLY IN LIEU OF ALL OTHER WARRANTIES, OBLIGATIONS OR LIABILITIES, WHETHER WRITTEN, ORAL, EXPRESS OR IMPLIED, INCLUDING ANY WARRANTY OF MERCHANTABILITY OR FITNESS FOR A PARTICULAR PURPOSE, OR OTHERWISE. IN NO CASE SHALL THE MANUFACTURER BE LIABLE TO ANYONE FOR ANY CONSEQUENTIAL OR INCIDENTAL DAMAGES FOR BREACH OF THIS WARRANTY OR ANY OTHER WARRANTIES WHATSOEVER, AS AFORESAID.

THE MANUFACTURER SHALL IN NO EVENT BE LIABLE FOR ANY SPECIAL, INDIRECT, INCIDENTAL, CONSEQUENTIAL OR PUNITIVE DAMAGES OR FOR LOSS, DAMAGE, OR EXPENSE, INCLUDING LOSS OF USE, PROFITS, REVENUE, OR GOODWILL, DIRECTLY OR INDIRECTLY ARISING FROM PURCHASER'S USE OR INABILITY TO USE THE PRODUCT, OR FOR LOSS OR DESTRUCTION OF OTHER PROPERTY OR FROM ANY OTHER CAUSE, EVEN IF MANUFACTURER HAS BEEN ADVISED OF THE POSSIBILITY OF SUCH DAMAGE.

THE MANUFACTURER SHALL HAVE NO LIABILITY FOR ANY DEATH, PERSONAL AND/OR BODILY INJURY AND/OR DAMAGE TO PROPERTY OR OTHER LOSS WHETHER DIRECT, INDIRECT, INCIDENTAL, CONSEQUENTIAL OR OTHERWISE, BASED ON A CLAIM THAT THE PRODUCT FAILED TO FUNCTION. HOWEVER, IF THE MANUFACTURER IS HELD LIABLE, WHETHER DIRECTLY OR INDIRECTLY, FOR ANY LOSS OR DAMAGE ARISING UNDER THIS LIMITED WARRANTY, THE MANUFACTURER'S MAXIMUM LIABILITY (IF ANY) SHALL NOT IN ANY CASE EXCEED THE PURCHASE PRICE OF THE PRODUCT INVOLVED, WHICH SHALL BE FIXED AS LIQUIDATED DAMAGES AND NOT AS A PENALTY, AND SHALL BE THE COMPLETE AND EXCLUSIVE REMEDY AGAINST THE MANUFACTURER.

When accepting the delivery of the Product, the Purchaser agrees to the said conditions of sale and warranty and he recognizes having been informed of.

Some jurisdictions do not allow the exclusion or limitation of incidental or consequential damages, so these limitations may not apply under certain circumstances.

The Manufacturer shall be under no liability whatsoever arising out of the corruption and/or malfunctioning of any telecommunication or electronic equipment or any programs.

The Manufacturer's obligations under this Warranty are limited solely to repair and/or replace at the Manufacturer's discretion any Product or part thereof that may prove defective. Any repair and/or replacement shall not extend the original Warranty period. The Manufacturer shall not be responsible for dismantling and/or reinstallation costs. To exercise this Warranty the Product must be returned to the Manufacturer freight pre-paid and insured. All freight and insurance costs are the responsibility of the Purchaser and are not included in this Warranty.

For sales in Israel only:

The Purchaser shall comply with the provisions of the Israeli Consumer Protection Law – 1981 ("Consumer Protection Law") related regulations, including the Israeli Consumer Protection Regulations (Warranty Sticker), 5772-2012 ("Regulations"), including, without limitation (i) providing its customers with at least the minimum warranty required by the Consumer Protection Law, and (ii) ensuring that a warranty certificate and a warranty sticker (as defined in the Regulations) ("Warranty Sticker") shall be attached to any sold Products and the date of the sale of the Product to the consumer or the end-user shall be added in a readable manner on the Warranty Sticker.

In no event shall the Purchaser's compliance with the Consumer Protection Law and Regulations expand any of the Manufacturer's warranty obligations under this warranty, and the Purchaser shall be responsible for any warranty that it provides with respect to the Products which exceeds or is different from this warranty.

This warranty shall not be modified, varied or extended, and the Manufacturer does not authorize any person to act on its behalf in the modification, variation or extension of this warranty. This warranty shall apply to the Product only. All products, accessories or attachments of others used in conjunction with the Product, including batteries, shall be covered solely by their own warranty, if any. The Manufacturer shall not be liable for any damage or loss whatsoever, whether directly, indirectly, incidentally, consequentially or otherwise, caused by the malfunction of the Product due to products, accessories, or attachments of others, including batteries, used in conjunction with the Products. This Warranty is exclusive to the original Purchaser and is not assignable.

This Warranty is in addition to and does not affect your legal rights. Any provision in this warranty which is contrary to the Law in the state or country where the Product is supplied shall not apply.

Governing Law:

This disclaimer of warranties and limited warranty are governed by the domestic laws of Israel.

Warning

The user must follow the Manufacturer's installation and operational instructions including testing the Product and its whole system at least once a week and to take all necessary precautions for his/her safety and the protection of his/her property.

* In case of a conflict, contradiction or interpretation between the English version of the warranty and other versions, the English version shall prevail.



EMAIL: info@visonic.com

INTERNET: www.visonic.com

©VISONIC LTD. 2017 WCDMA-3G PG2 Installation Instructions D-307122 (REV 0, 09/17)



D-307122