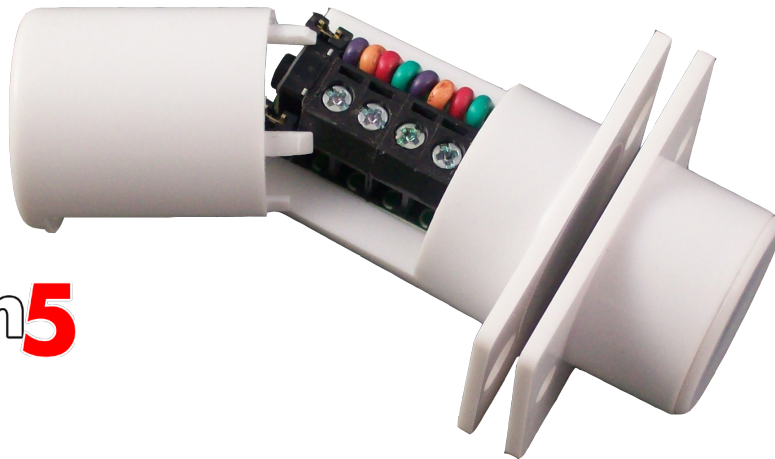


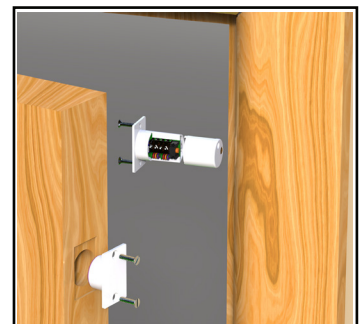
FC508/WH or BR/MULTI/G2/EN
FLUSH QUICK FIT DOOR CONTACT

CQR
 First choice for quality



System5
 APPROVED

- Screw terminal block, no junction box required
- Microswitch tamper
- Selectable end of line resistor
- Can use own resistors
- Available in white or brown
- Can be fitted in double pole systems
- Can be used on double door configuration



Product codes

Code	Description
FC508/WH/MULTI/G2/EN	Flush Contact Grade 2 White
FC508/BR/MULTI/G2/EN	Flush Contact Grade 2 Brown

Technical data

Connections	4 Terminals	Voltage Range	12Vdc
Switches	1	Switching Current	500mA @ 12Vdc
Pull-in Gap	9mm	Contact Material	Rhodium
Material	High Impact Polystyrene	Colours	White or Brown
Contact Size	33 x 22 x 32mm	Tamper	Cover & RFMS
Magnet Size	33 x 22 x 13mm	Standards	EN50131-2-6 Grade 2
Contact Form	SPST form A	Environmental Class	II

rev. 2-7/2018



www.cqr.co.uk

info@cqr.co.uk

Sales: +(0)151 606 1000 Tech: +(0)151 606 6311

CQR Fire & Security, 125 Pasture Road, Moreton, Wirral, CH46 4TH, UK



Scan or click for online

