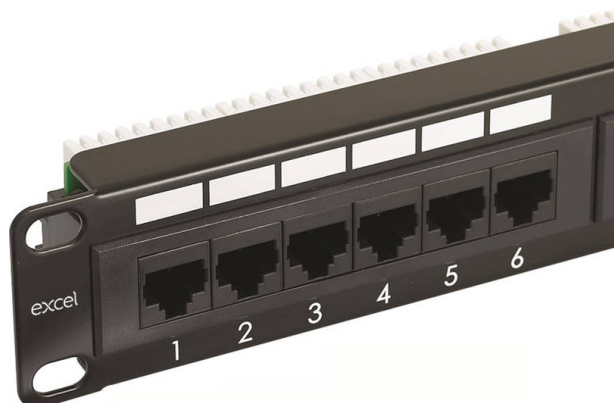


Excel Cat6 24 Port Unscreened Patch Panel 1U LSA Punch Down Black

Item Code: 100-304

excel
without compromise.



✕ Available in 24 or 48 ports

✕ Backwards compatible

✕ Rear cable management

✕ LSA Style Right Angled Termination

✕ Cage nuts and mini cable ties included

✕ T568A/B Wiring Configuration

Product Overview

100-304 Excel Cat6 24 Port Unscreened Patch Panel 1U LSA Punch Down Black, available as part of a range of Cat6 Patch Panels in stock at Mayflex.

Excel Category 6 Unscreened Patch Panels have been designed to meet or exceed the latest ISO and TIA requirements for category 6 compliance.

Each panel has a screen printed labelling field positioned above each port, included with the panel is a pre-printed self-adhesive labelling sheet, pre-numbered 1- 96, for fast and easy labelling on site.

Termination can be made using LSA compatible tools, and cable tie bridges are positioned between the IDC blocks to relieve cable stress. Each panel consists of a number of 8 way blocks of RJ45 sockets, housed in a high quality plastic moulding.

Product Specifications

Feature	Values
Number of ports - loaded	24
Type of connector	RJ45 8(8)
Category	6
Connection type	LSA
Number of rack units (RU)	1
Colour	Black
Mounting method	19 inch mounting
Height	44 mm

Excel Cat6 24 Port Unscreened Patch Panel 1U LSA Punch Down Black

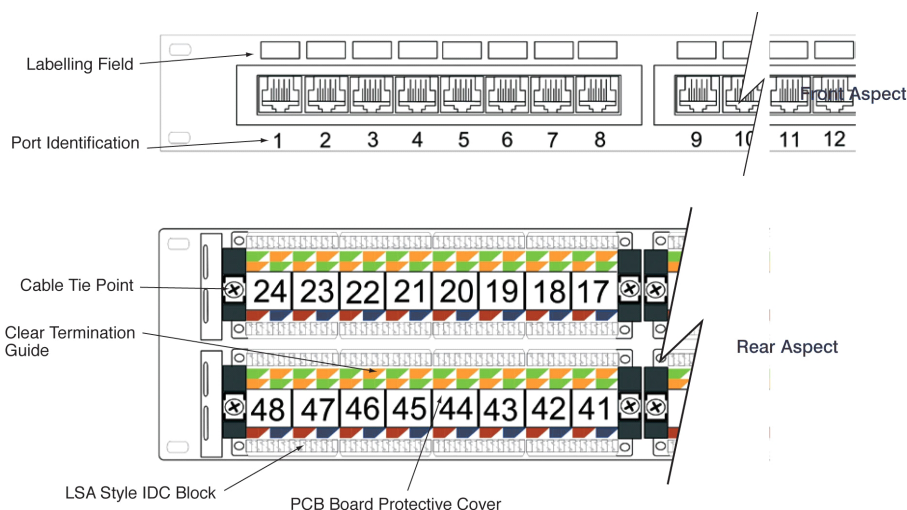
Item Code: 100-304

excel
without compromise.

Width 480 mm

Depth 33 mm

Product drawing



Additional specifications

Features	Values
Wiring Specification	T568A/T568B
RJ45 Jack Min life expectancy	750 insertions
RJ45 Jack contact	50 microinch gold over 100 microinch nickel undercoat
IDC Contacts Max life expectancy	200 terminations
Contact compatibility	22 to 26AWG
Operating Temperature Range	-10°C to 60°C
Storage Temperature Range	-40°C to 68°C
Relative Humidity	10% to 90%
Panel material	SPCC
Frame material	ABS
Jack housing material	PBT, 30% glass fiber filled
IDC material	Phosphor bronze, tin over nickel undercoat

Excel Cat6 24 Port Unscreened Patch Panel 1U LSA Punch Down Black

Item Code: 100-304



Standards

Applicable standard	Detail
ISO/IEC 11801-1:2017	Information technology - Generic cabling for customer premises: Part 1 General Requirements
IEC 61156-5:2009+AMD1:2012 CSV	Multicore and symmetrical pair/quad cables for digital communications - Part 5: Symmetrical pair/quad cables with transmission characteristics up to 1 000 MHz - Horizontal floor wiring - Sectional specification
EN 50173-1:2018	Information technology. Generic cabling systems - General requirements
EN 50173-2:2007 + A1:2010	Information technology. Generic cabling systems - Office premises
ANSI/TIA 568-2.D	Balanced Twisted-Pair Telecommunications Cabling and Components Standards
ANSI/EIA-310-E	Electronic Industries Association standard for horizontal spacing, vertical hole spacing, rack opening and front panel width
RoHS	Restriction of Hazardous Substances - Compliant
WFD	Compliant to Waste Framework Directive
SCIP	Compliant - Does Not Contain Substances of Concern in Products

Part Number Table

Part Number	Description
100-304	Excel Cat6 24 Port Unscreened Patch Panel 1U LSA Punch Down Black
100-306	Excel Cat6 48 Port Unscreened Patch Panel 2U LSA Punch Down Cable Management Black

Excel is a world class premium performing end to end infrastructure solution designed, Manufactured, supported and delivered without compromise.

Contact us at sales@excel-networking.com



E&OE. Excel is a registered trade name of Mayflex Holdings Ltd.